



Y8

**Common Assessment**

### Decision-making exercise

A project to develop students decision-making and critical thinking skills

HT6



### Fantastic Places

Fantastic places topics will be used randomly at the end of topics to give a broad understanding of the places on Earth.

**Common Assessment**

HT5

### Ecosystems – Tropical Rainforests

- To understand what an ecosystem is
- To understand the components of the rainforest ecosystem
- To explore the adaptations animals and plants have made to survive in the rainforest

### Africa & the Horn of Africa Continued...

HT4



### Africa & the Horn of Africa

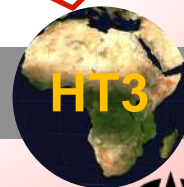
- Understand the physical landscape
- Natural Resources found in Africa
- How Africa's past has shaped the present through colonies.
- To understand biomes of Africa
- To understand the population distribution of Africa.



### Introduction to Geography, Geography skills & What is a geographer? Continued...

**Common Assessment**

HT3



HT2



### Introduction to Geography, Geography skills & What is a geographer?

- |                                     |   |
|-------------------------------------|---|
| - Being a geographer                | - Studying people and places                      |
| - Asking geographical questions     | - How to use geographical data, including OS maps |
| - Conducting geographical enquiries | - Mapskills                                       |



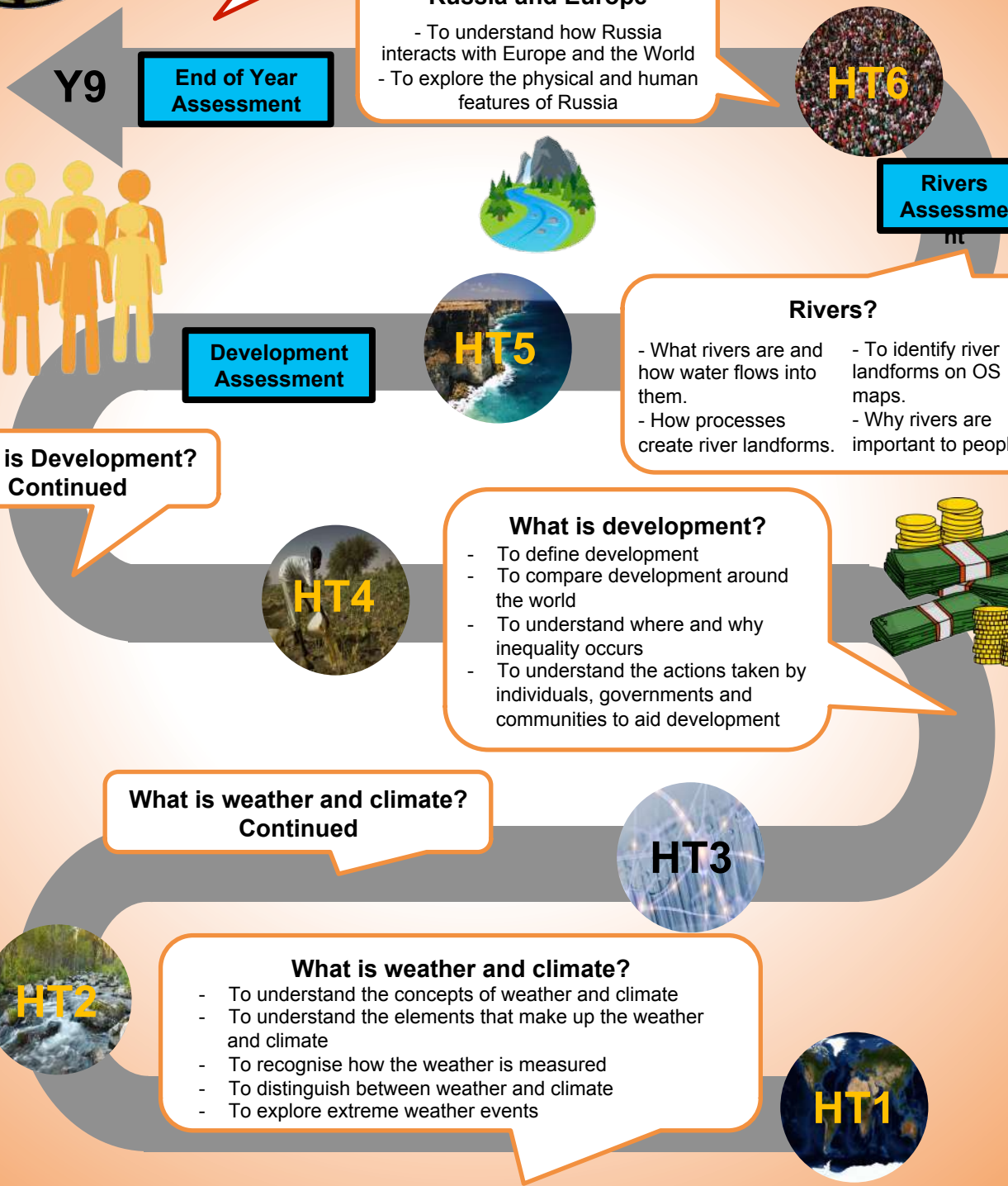
HT1





# KS3 YEAR 8

# GEOGRAPHY



Y9

**End of Year Assessment**

**Fantastic Places**  
 Fantastic places topics will be used randomly at the end of topics to give a broad understanding of the places on Earth.

**Russia and Europe**  
 - To understand how Russia interacts with Europe and the World  
 - To explore the physical and human features of Russia



**Rivers Assessment**

**Rivers?**  
 - What rivers are and how water flows into them.  
 - How processes create river landforms.  
 - To identify river landforms on OS maps.  
 - Why rivers are important to people?



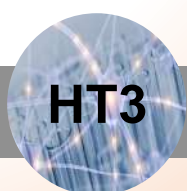
**Development Assessment**

**What is Development? Continued**

**What is development?**  
 - To define development  
 - To compare development around the world  
 - To understand where and why inequality occurs  
 - To understand the actions taken by individuals, governments and communities to aid development



**What is weather and climate? Continued**



**What is weather and climate?**  
 - To understand the concepts of weather and climate  
 - To understand the elements that make up the weather and climate  
 - To recognise how the weather is measured  
 - To distinguish between weather and climate  
 - To explore extreme weather events



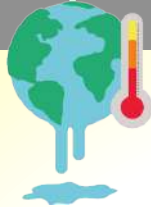
# Curriculum Road Map for Geography



## KS4

### Climate Change/ Decision-making exercise

- Global patterns of climate change and greenhouse gas emissions
- Consequences of climate change
- Evidence of climate change
- How do we mitigate the climate change



### Coasts Assessment

### Coasts - What happens where the land meets the sea?

- Understand processes create and change coastal landforms over time.
- To consider how the coast is used by people.
- To understand the need for, and impact of, different coastal management strategies.



### Why is the Middle East important ?

- Identify the meaning of a region
- Locate the Middle East and its countries
- Understand geographical questions of ME
- Understand conflict in the Middle East

### Middle East Assessment



### Natural Hazards Continued



### Natural Hazards Assessment

### Natural Hazards

- What are earthquakes and volcanoes?
- How do we measure activity?
- Where do we find tectonic activity?
- Case studies
- How do we monitor activity?

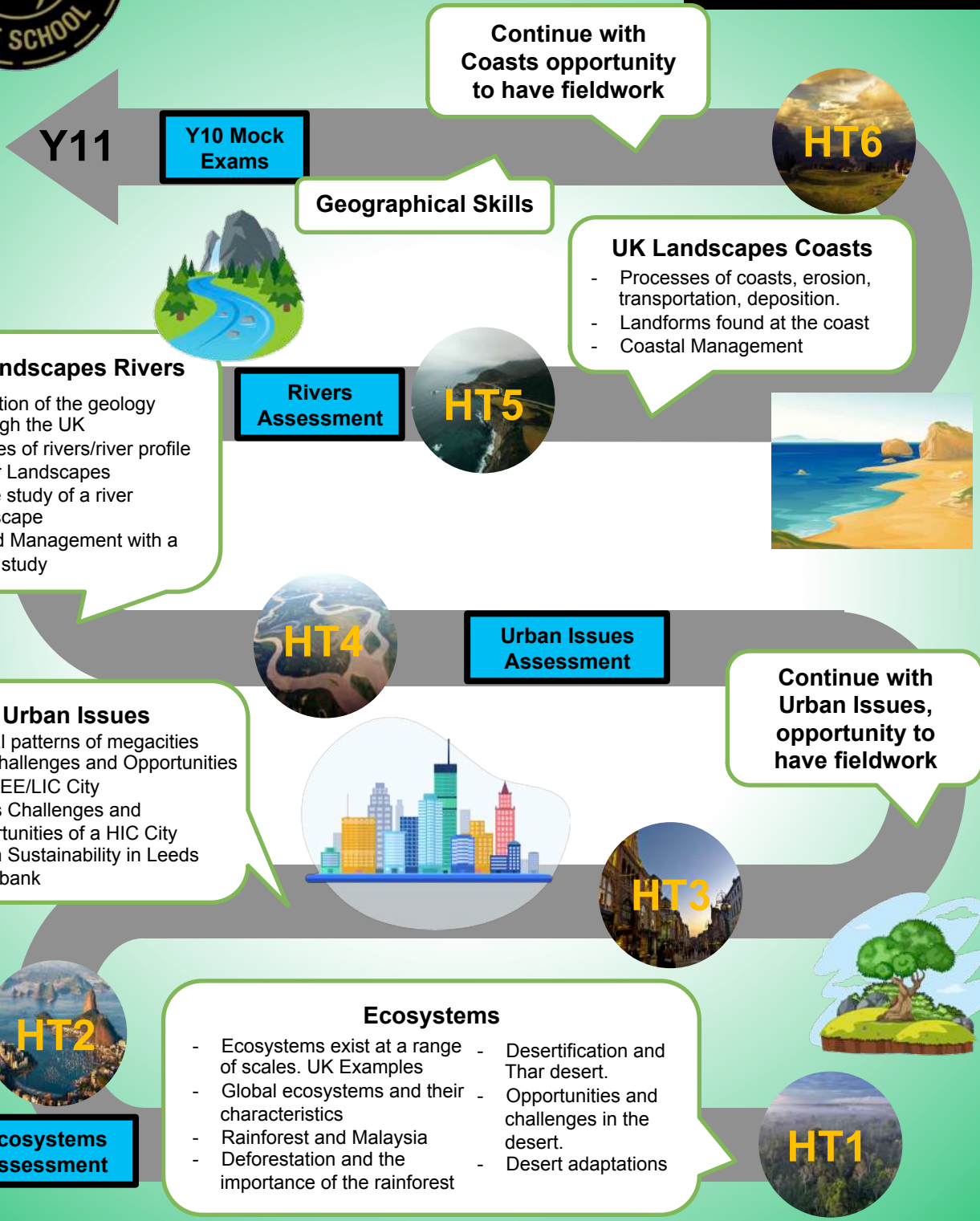
## HT3



### How are populations changing?

- Describe world population distribution and change.
- How countries attempt to control population change.
- Understand types of migration.
- Understand urbanisation and how cities evolve.





Y11

Y10 Mock Exams

Continue with Coasts opportunity to have fieldwork



Geographical Skills

**UK Landscapes Coasts**

- Processes of coasts, erosion, transportation, deposition.
- Landforms found at the coast
- Coastal Management



**UK Landscapes Rivers**

- Location of the geology through the UK
- Stages of rivers/river profile
- River Landscapes
- Case study of a river landscape
- Flood Management with a case study

Rivers Assessment



Urban Issues Assessment

**Urban Issues**

- Global patterns of megacities
- Rio Challenges and Opportunities of a NEE/LIC City
- Leeds Challenges and Opportunities of a HIC City
- Urban Sustainability in Leeds Southbank

Continue with Urban Issues, opportunity to have fieldwork



Ecosystems Assessment

**Ecosystems**

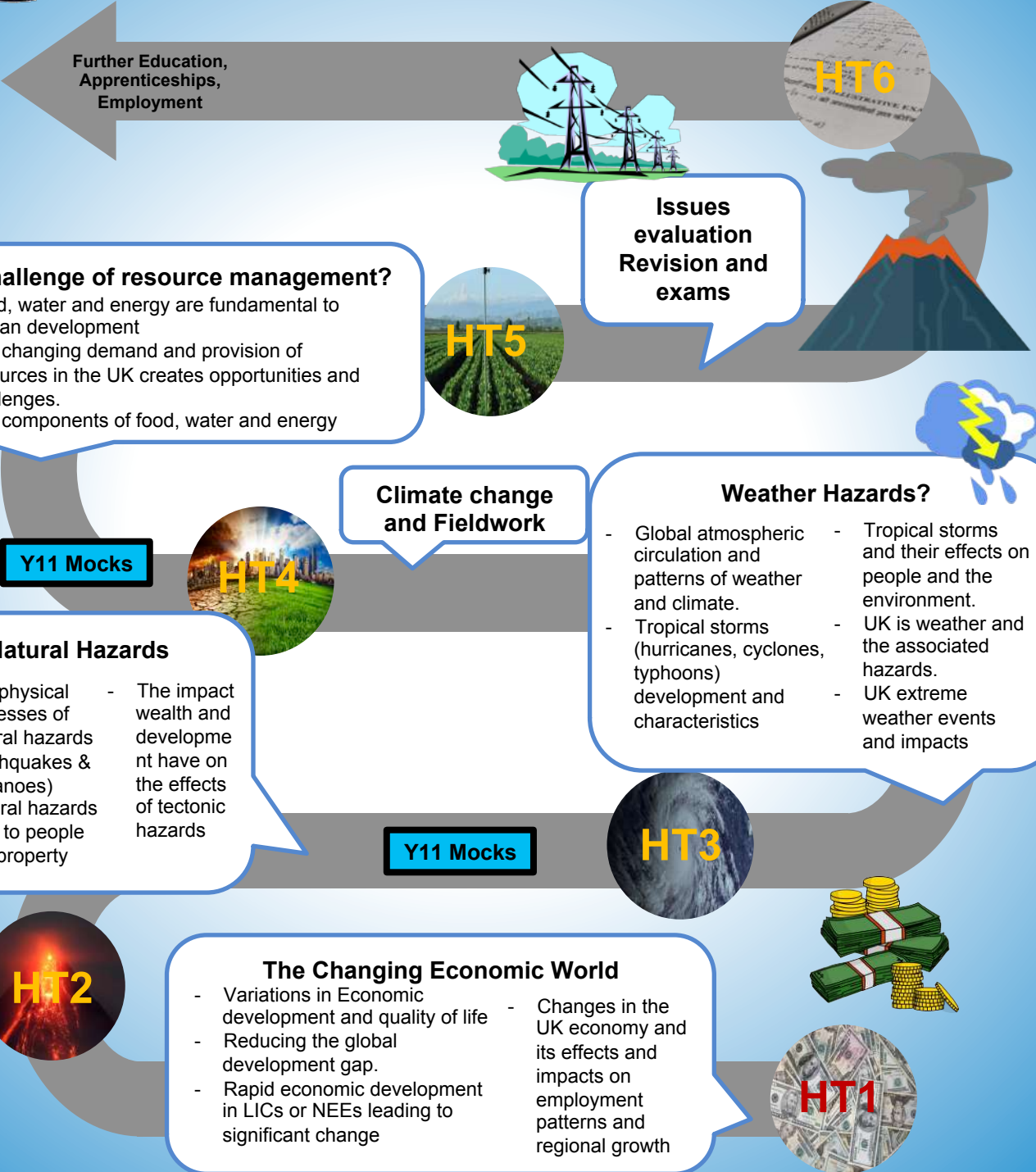
- Ecosystems exist at a range of scales. UK Examples
- Global ecosystems and their characteristics
- Rainforest and Malaysia
- Deforestation and the importance of the rainforest
- Desertification and Thar desert.
- Opportunities and challenges in the desert.
- Desert adaptations





# KS4 YEAR 11

# GEOGRAPHY



Further Education,  
Apprenticeships,  
Employment



**Issues evaluation  
Revision and  
exams**



**The challenge of resource management?**

- Food, water and energy are fundamental to human development
- The changing demand and provision of resources in the UK creates opportunities and challenges.
- Key components of food, water and energy



**Climate change  
and Fieldwork**

**Weather Hazards?**

- Global atmospheric circulation and patterns of weather and climate.
- Tropical storms (hurricanes, cyclones, typhoons) development and characteristics
- Tropical storms and their effects on people and the environment.
- UK is weather and the associated hazards.
- UK extreme weather events and impacts

**Y11 Mocks**



**Natural Hazards**

- The physical processes of natural hazards (earthquakes & volcanoes)
- Natural hazards risks to people and property
- The impact wealth and development have on the effects of tectonic hazards

**Y11 Mocks**



**The Changing Economic World**

- Variations in Economic development and quality of life
- Reducing the global development gap.
- Rapid economic development in LICs or NEEs leading to significant change
- Changes in the UK economy and its effects and impacts on employment patterns and regional growth



# Curriculum Road Map for Geography